

2. Konzert für Klavier und Orchester

Friedrich Radermacher

Allegro ♩ = 104

1. Satz

3
mf
7
mf

15
10
mf

30
2
10
f
f

46
2
f

53
p

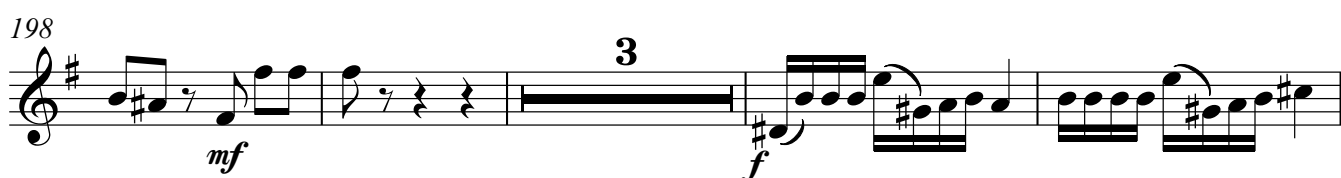
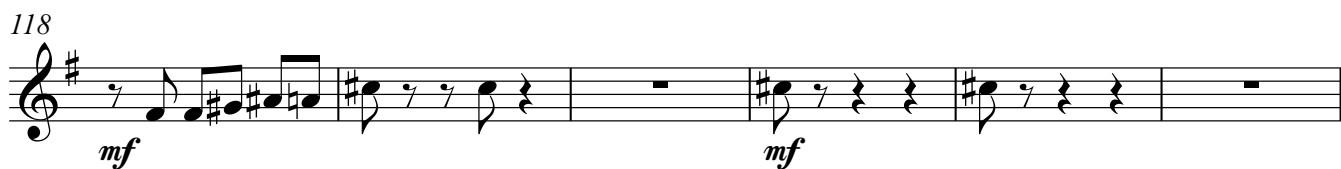
60
rit. . . a tempo ♩ = 104
9

75
f
3

99
mf
pp

106
5

113
7
p
3



Larghetto $\text{♩} = 50$

2. Satz

246 *p* *p* *rit.*

252 *pp* *mf*

27 *a tempo* $\text{♩} = 50$ *pp* *fp* *p*

293 *poco rit.* *a tempo* $\text{♩} = 68$ *rit.*

3 *Tempo 1* $\text{♩} = 50$ *p*

345 *pp* *pp*

3. Satz

Allegro scherzando $\text{♩} = 132$

357 *p* *p*

361 *fp* *fp* *fp* *4*

369 20

mf cresc. *f*

Detailed description: Musical staff starting at measure 369. It begins with a whole rest, followed by a quarter note G4, a quarter note A4, and a quarter note B4. This is followed by a 20-measure rest. The staff ends with a quarter note G4, a quarter note F#4, and a quarter note E4. Dynamics: *mf cresc.* at the beginning, *f* at the end.

394

Detailed description: Musical staff starting at measure 394. It begins with a quarter note G4, a quarter note A4, and a quarter note B4. This is followed by a 4-measure rest, then a quarter note C#5, a quarter note B4, and a quarter note A4. The staff ends with a quarter note G4, a quarter note F#4, and a quarter note E4.

405 18

f

Detailed description: Musical staff starting at measure 405. It begins with a quarter note G4, a quarter note A4, and a quarter note B4. This is followed by an 18-measure rest. The staff ends with a quarter note G4, a quarter note F#4, and a quarter note E4. Dynamics: *f* at the end.

427 3

f

Detailed description: Musical staff starting at measure 427. It begins with a quarter note G4, a quarter note A4, and a quarter note B4. This is followed by a quarter note C#5, a quarter note B4, and a quarter note A4. This is followed by a 3-measure rest. The staff ends with a quarter note G4, a quarter note F#4, and a quarter note E4. Dynamics: *f* at the end.

435

f

Detailed description: Musical staff starting at measure 435. It begins with a quarter note G4, a quarter note A4, and a quarter note B4. This is followed by a quarter note C#5, a quarter note B4, and a quarter note A4. The staff ends with a quarter note G4, a quarter note F#4, and a quarter note E4. Dynamics: *f* at the beginning.

440 rit. . . . Poco meno ♩ = 112

4

Detailed description: Musical staff starting at measure 440. It begins with a 4-measure rest. This is followed by a quarter note G4, a quarter note A4, and a quarter note B4. The staff ends with a quarter note G4, a quarter note F#4, and a quarter note E4.

447 19

p *p*

Detailed description: Musical staff starting at measure 447. It begins with a 19-measure rest. The staff ends with a quarter note G4, a quarter note F#4, and a quarter note E4. Dynamics: *p* at the beginning and *p* at the end.

469

Detailed description: Musical staff starting at measure 469. It begins with a quarter note G4, a quarter note A4, and a quarter note B4. The staff ends with a quarter note G4, a quarter note F#4, and a quarter note E4.

473 9 2

mf *f* *f*

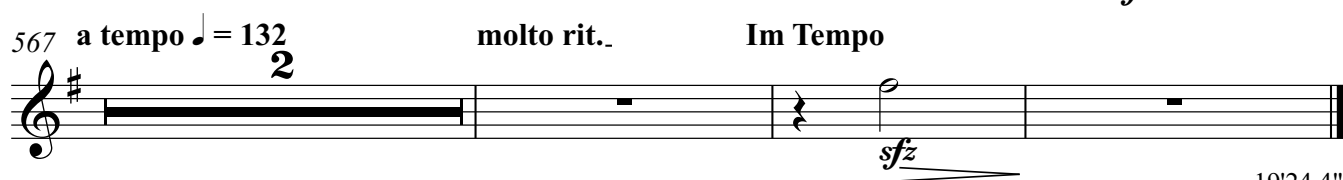
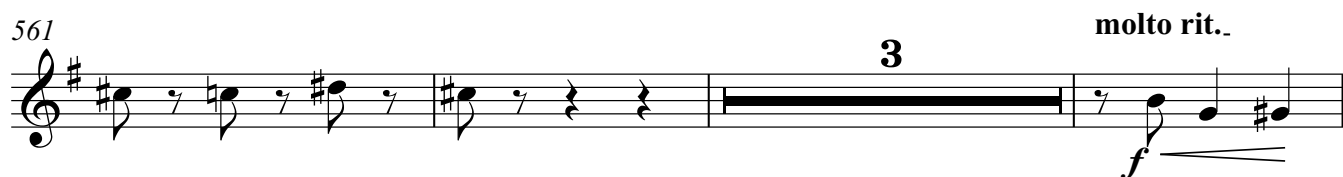
Detailed description: Musical staff starting at measure 473. It begins with a 9-measure rest. This is followed by a quarter note G4, a quarter note A4, and a quarter note B4. This is followed by a 2-measure rest. The staff ends with a quarter note G4, a quarter note F#4, and a quarter note E4. Dynamics: *mf*, *f*, and *f* at different points.

488 rit. Tempo 1 ♩ = 132

2 3

p

Detailed description: Musical staff starting at measure 488. It begins with a quarter note G4, a quarter note A4, and a quarter note B4. This is followed by a 2-measure rest. This is followed by a 3-measure rest. The staff ends with a quarter note G4, a quarter note F#4, and a quarter note E4. Dynamics: *p* at the end.



19'24.4"